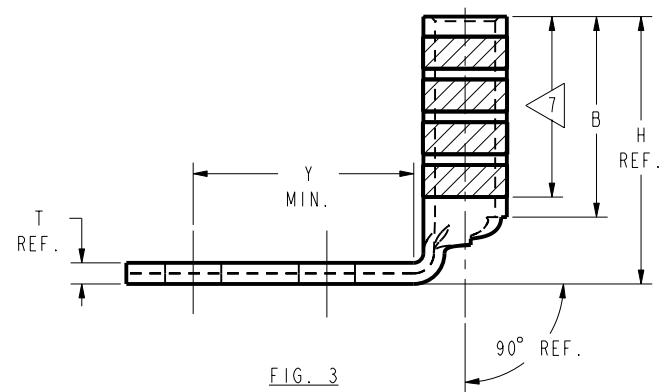
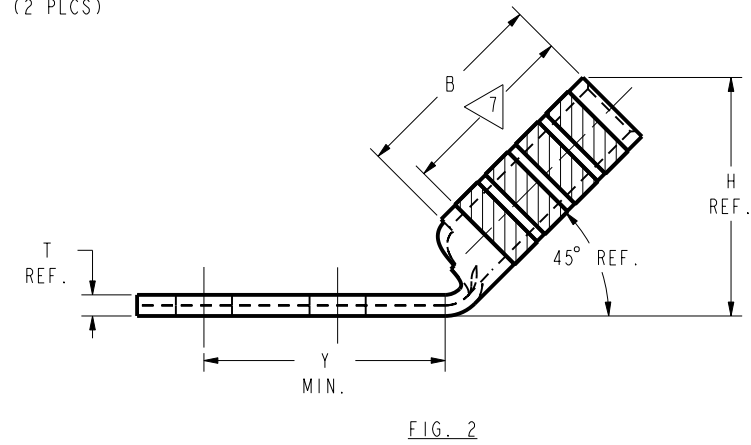
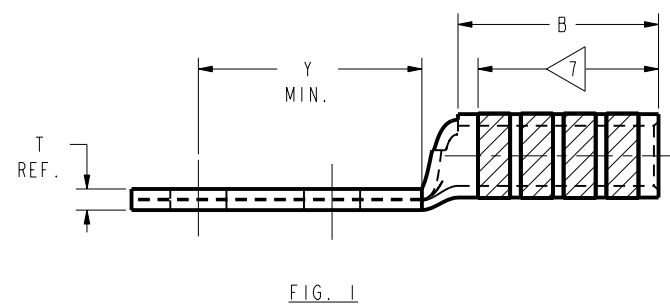
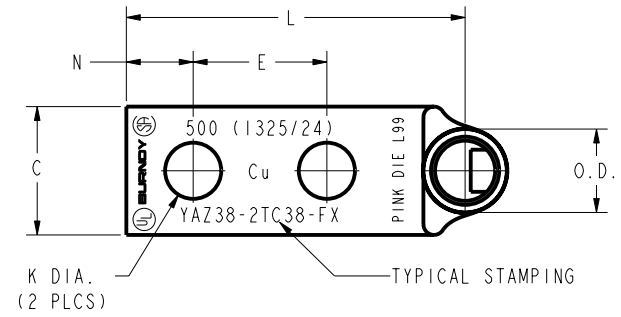
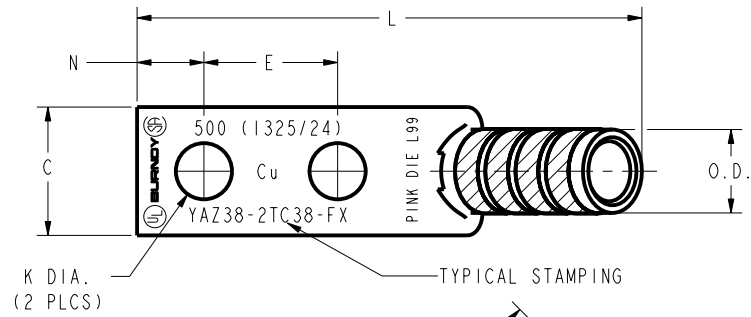
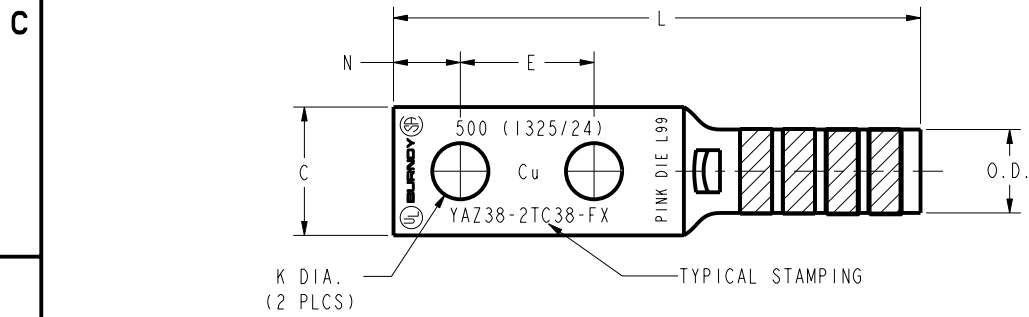


REV	DATE	DESCRIPTION	ECO	BY	C'H'K.
B	1/11/2001 12:00:00 AM	REDRAW AND CATALOG NUMBER UPDATON OF SALES DRAWINGS	17057	BSB	BSK

CATALOG NO.	CONDUCTOR		BOLT SIZE	FIG. NO.	DIMENSIONS										INSTALLATION TOOLING (# CRIMPS)						
	FLEX	CODE (AWG)			B	C	E	H REF.	K DIA.	L	N	O.D.	T REF.	Y MIN.	DIE INDEX	COLOR CODE	HYDRAULIC			DIELESS (# CRIMPS)	WIRE STRIP LENGTH
																	Y750	Y46	Y45		
YAZ382NTC38FX	535.3 kcmil 1325/24	---	3/8 [M10]	1	2.81 [71]	1.62 [41]	1.00 [25]	---	.40 [10]	5.72 [145]	.50 [13]	1.25 [32]	.27 [7]	1.53 [39]	L99	PINK	Y35, BAT35 Y39, BAT750	Y46	Y45	HYDRAULIC: Y644, Y644M Y644MBH, (1)	2-7/8
YAZ382NTC38FX45	500 kcmil FLEX	---		2	4.16 [106]			5.72 [145]		2.84 [72]							U38XRT UR4140WE (4)	U38XRT UR4140WE (4)	U38XRT UR4140WE (4)		
YAZ382NTC38FX90	500 kcmil FLEX			3																	
YAZ382TC38FX	535.3 kcmil 1325/24	---	1	---	5.72 [145]	2.84 [72]	U38XRT UR4140WE (4)	U38XRT UR4140WE (4)	U38XRT UR4140WE (4)												
YAZ382TC38FX45	500 kcmil FLEX	---	2	1.84 [47]	1.00 [25]	3.57 [91]	.40 [10]	5.26 [134]	.50 [13]	1.25 [32]	.27 [7]	1.53 [39]	L99	PINK	Y750 Y35, BAT35 Y39, BAT750	Y46	Y45	HYDRAULIC: Y644, Y644M Y644MBH, (1)	2-7/8		
YAZ382TC38FX90	500 kcmil FLEX	---	3	2.81 [71]	1.62 [41]	1.00 [25]	4.16 [106]	.40 [10]	5.72 [145]	.50 [13]	1.25 [32]	.27 [7]	1.53 [39]	L99	PINK	Y750 Y35, BAT35 Y39, BAT750	Y46	Y45	HYDRAULIC: Y644, Y644M Y644MBH, (1)	2-7/8	



NOTES:

- MATERIAL: COPPER TUBING.
- FINISH: TIN PLATED.
- CATALOG # PT6515 ADAPTOR IS REQUIRED TO USE "U" DIES IN Y45 SERIES TOOLS.
- CATALOG # PUADP-1 ADAPTOR IS REQUIRED TO USE "U" DIES IN Y46 SERIES TOOLS.
- PERMANENT DIE IN TOOLING.
- DIMENSIONS IN BRACKETS [] ARE IN MILLIMETERS ROUNDED OFF TO THE NEAREST MILLIMETER, UNLESS OTHERWISE NOTED, AND ARE FOR REFERENCE ONLY.
- CRIMP (# OF CRIMPS PER TABLE) WITHIN THE LENGTH BETWEEN THE INK STAMPED CRIMPING AREA.

REV: PE0200

HYLUG™ (TWO HOLE FLEX)	
ITEM NO:	N/A
CAT. NO:	YAZ38--- (TABLE)
DRAWN BY:	D BOISVERT 8/19/99
CHECKER:	B MICHAUD 8/31/99
DSN APPVL:	RR TEAM 9/28/99
MFG APPVL:	-- --
QA APPVL:	J BRODEUR 10/6/99
MKT APPVL:	R ROBICHEAU 10/5/99
PROD FAM:	--
PROJECT #:	--
DOCUMENT TYPE:	Sales
REL LEVEL:	Released
SCALE:	NTS
DRAWING NO:	SE212273
REV:	B
SHEET:	40 OF 48